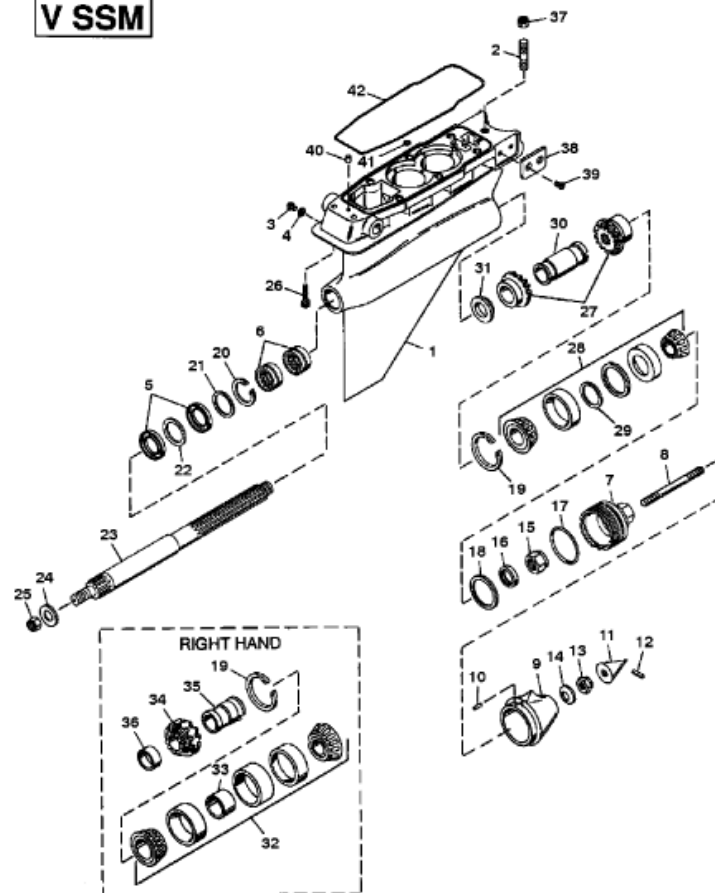


**V SSM**



18789

**Parts List**

Ref	Class	Part	Description	Qty	Comment	Footnote
1	1673	9849A 9	GEAR HOUSING ASSEMBLY	1	(BASIC)	
2	16	57986 1	STUD (.2810)	1		
3	10	14834	SCREW, (.735-16), Vent (Magnet)	1		
4	12	19183	WASHER, Fiber	1		
5	26	19473	SEAL, Oil	3		
6	31	39832	BEARING, Roller	2		
7		18991	ANCHOR, Stud	1		
8	16	53064 2	STUD, Nose Cone	1		
9		11353	NOSE CONE	1		
10	17	30282	PIN	1		
11		98036	CAP, Nose Cone	1		
12		65700	PLUG	1		
13	11	33002	NUT (.625-18)	1		
14	12	34961	WASHER	1		
15	11	39825	NUT (1.250-12)	1		
16	12	42262	WASHER	1		
17	25	32507	O-RING, (3.359 x .139)	1		
18	23	18995	SPACER	1		
19	53	18994099	RING, Snap (.099 Thick)	AR		
19	53	18994100	RING, Snap (.100 Thick)	AR		
19	53	18994101	RING, Snap (.101 Thick)	AR		
19	53	18994102	RING, Snap (.102 Thick)	AR		
19	53	18994103	RING, Snap (.103 Thick)	AR		
19	53	18994104	RING, Snap (.104 Thick)	AR		
19	53	18994105	RING, Snap (.105 Thick)	AR		
19	53	18994106	RING, Snap (.106 Thick)	AR		
19	53	18994107	RING, Snap (.107 Thick)	AR		
19	53	18994108	RING, Snap (.108 Thick)	AR		
19	53	18994109	RING, Snap (.109 Thick)	AR		
19	53	18994110	RING, Snap (.110 Thick)	AR		
19	53	18994111	RING, Snap (.111 Thick)	AR		
19	53	18994112	RING, Snap (.112 Thick)	AR		
20	53	815353	RING, Snap	1		
21	23	813637	SPACER	1		
22	23	813636	SPACER	1		
23	44	18989	PROPELLER SHAFT (RH)	1		
23	44	18988	PROPELLER SHAFT (LH)	1		
24	12	39817	WASHER	1		
25	11	39907	NUT (1.00-14)	1		
26	10	87370 2	SCREW, (.500-13 X 3.00)	2		
27	42	19220A 1	GEAR SET (Reverse and Drive)	2	(LH, 1.00:1 RATIO)	